

lntp\_numu.ncgamma\_flux13a\_neut533.000.root  
xsec\_prefit.lntp\_numu.ncgamma\_flux13a\_neut533.000.root

**mode** from lntp

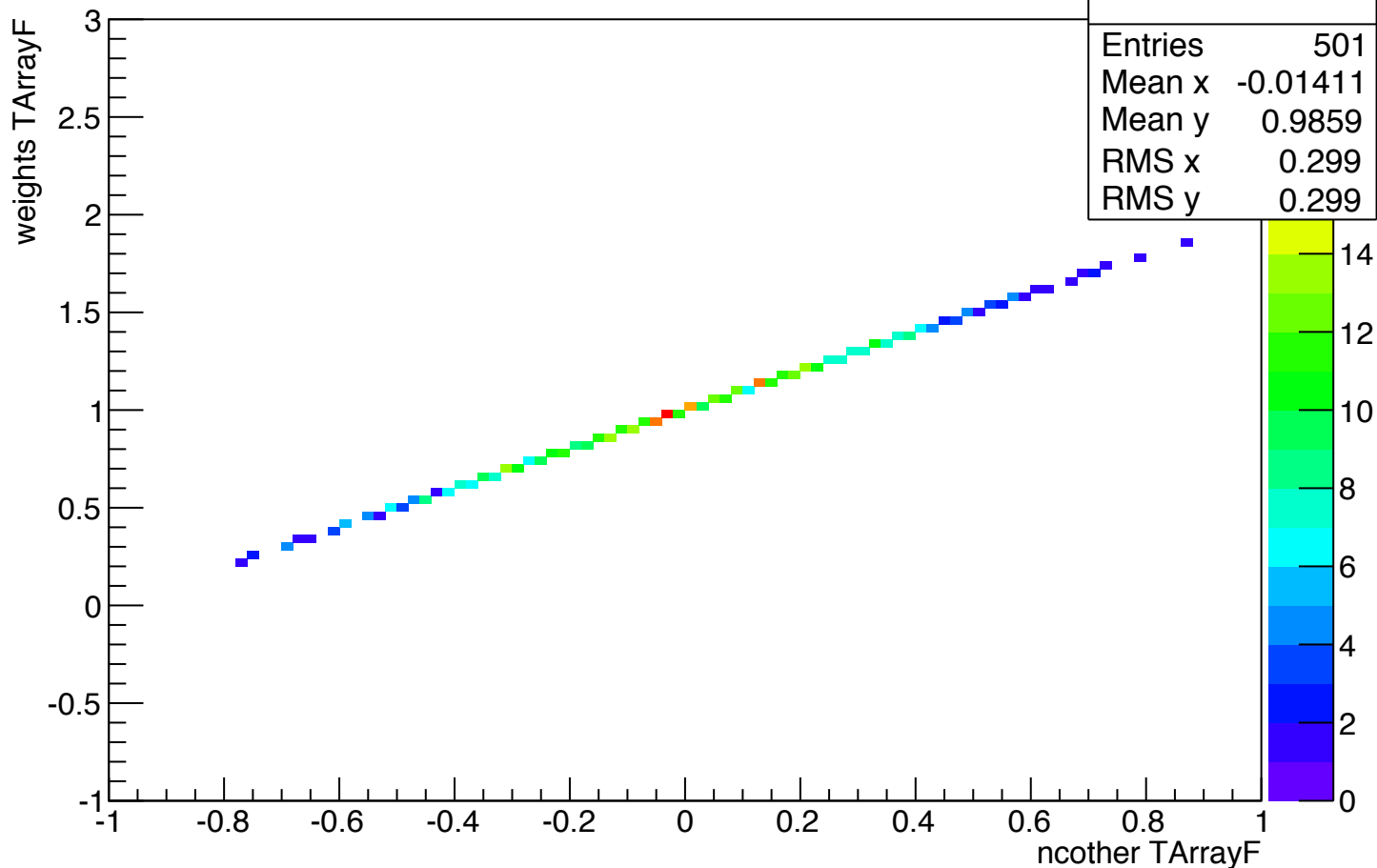
dial **brNIWG2012a\_ncotherE0** from xsec  
weight **weights** from xsec

each file:  
736 entries

- 352 nce entries (mode 51 or 52)
- 122 ccqe entries (mode 1)
  
- 357 ncother\_on events (modes 38, 39, 41–46, 51, 52)
- 379 ncother\_off events (everything else)

# ncother\_on

entry 0 (nce)



only 5 ncother\_on events are not nce:

mode = 41 entry = 41

mode = 45 entry = 204

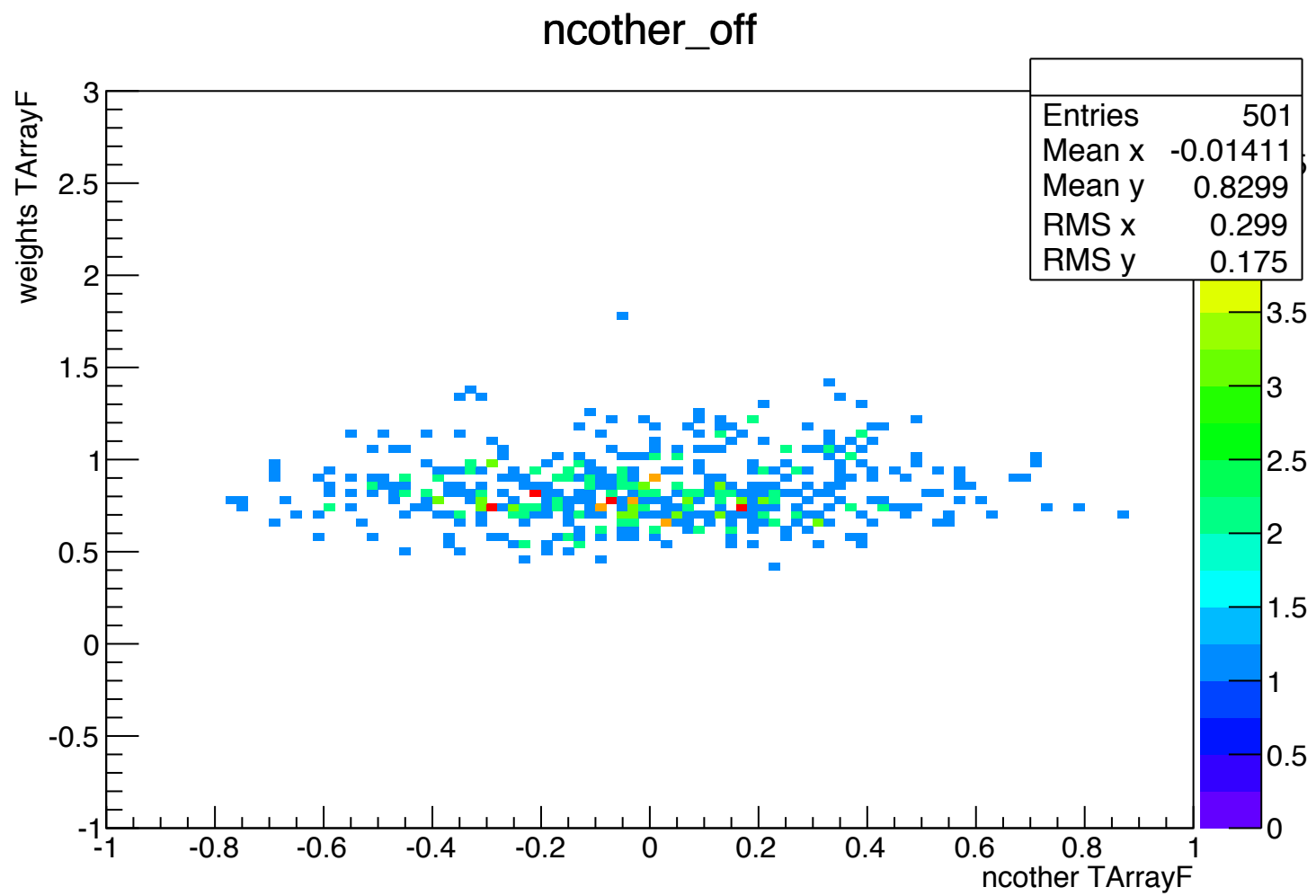
mode = 41 entry = 251

mode = 41 entry = 350

mode = 41 entry = 604

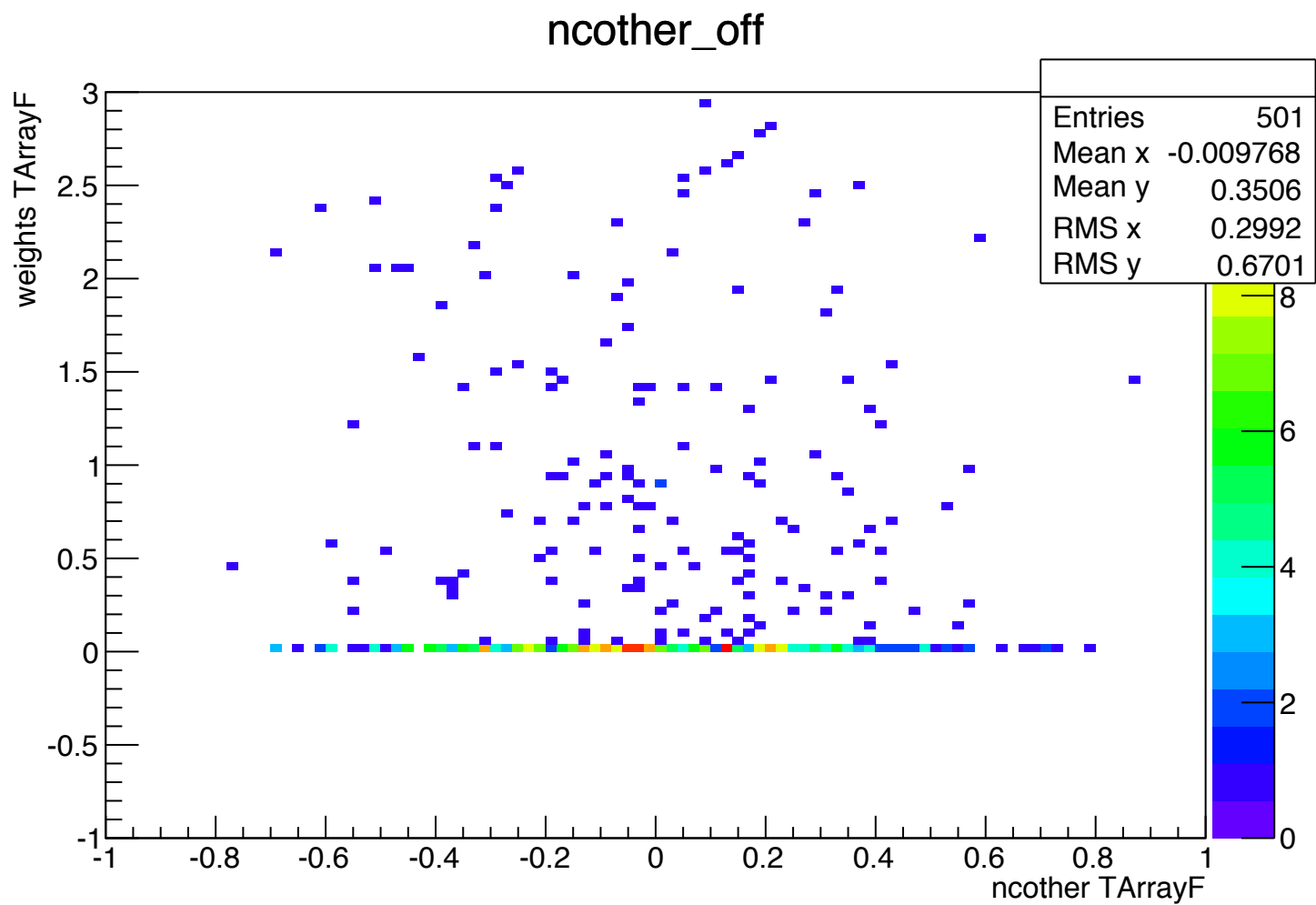
all ncother\_on TH2's look the same

entry 2 (mode?)



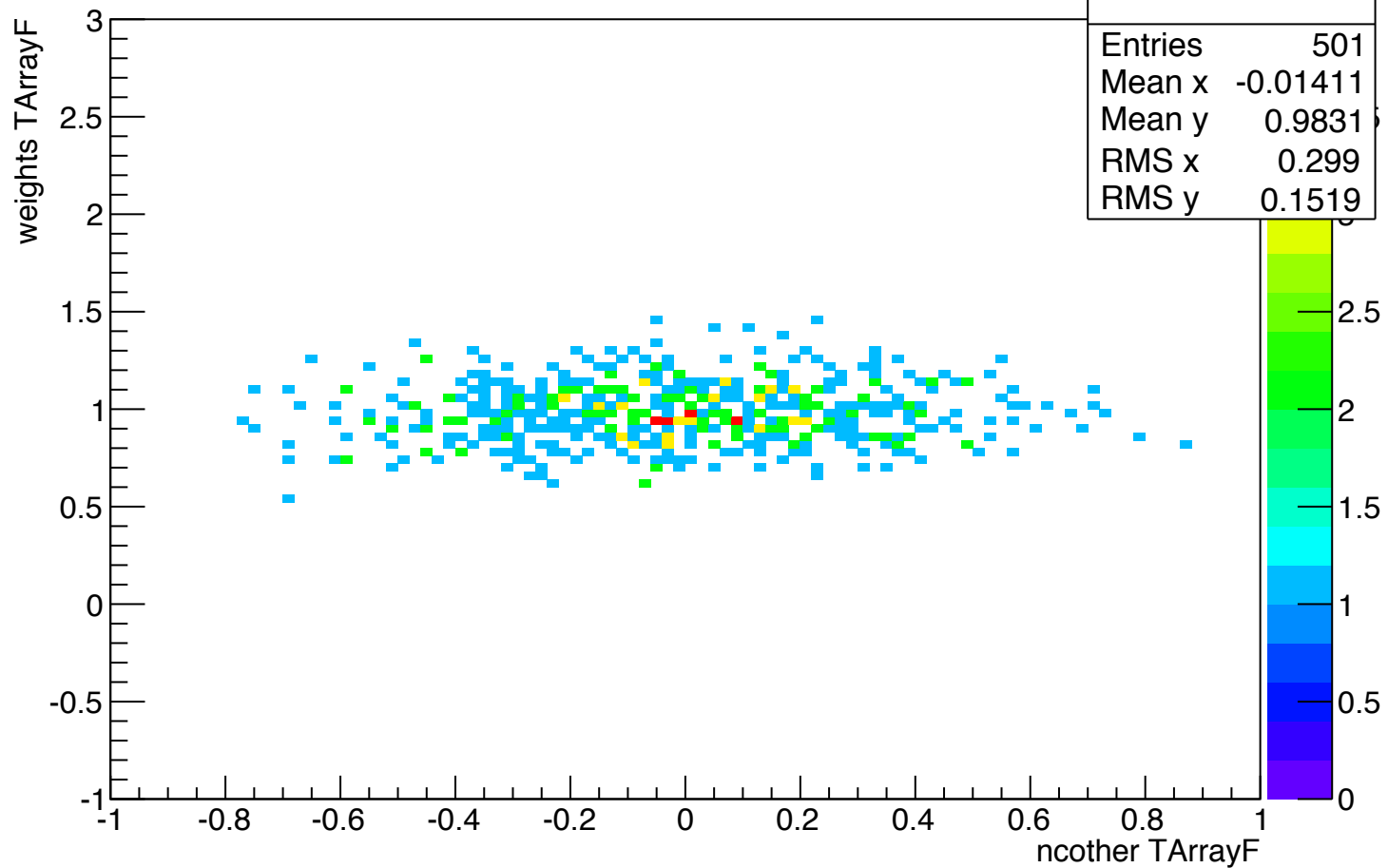
ncother\_off TH2's look different

entry 5 (mode?)

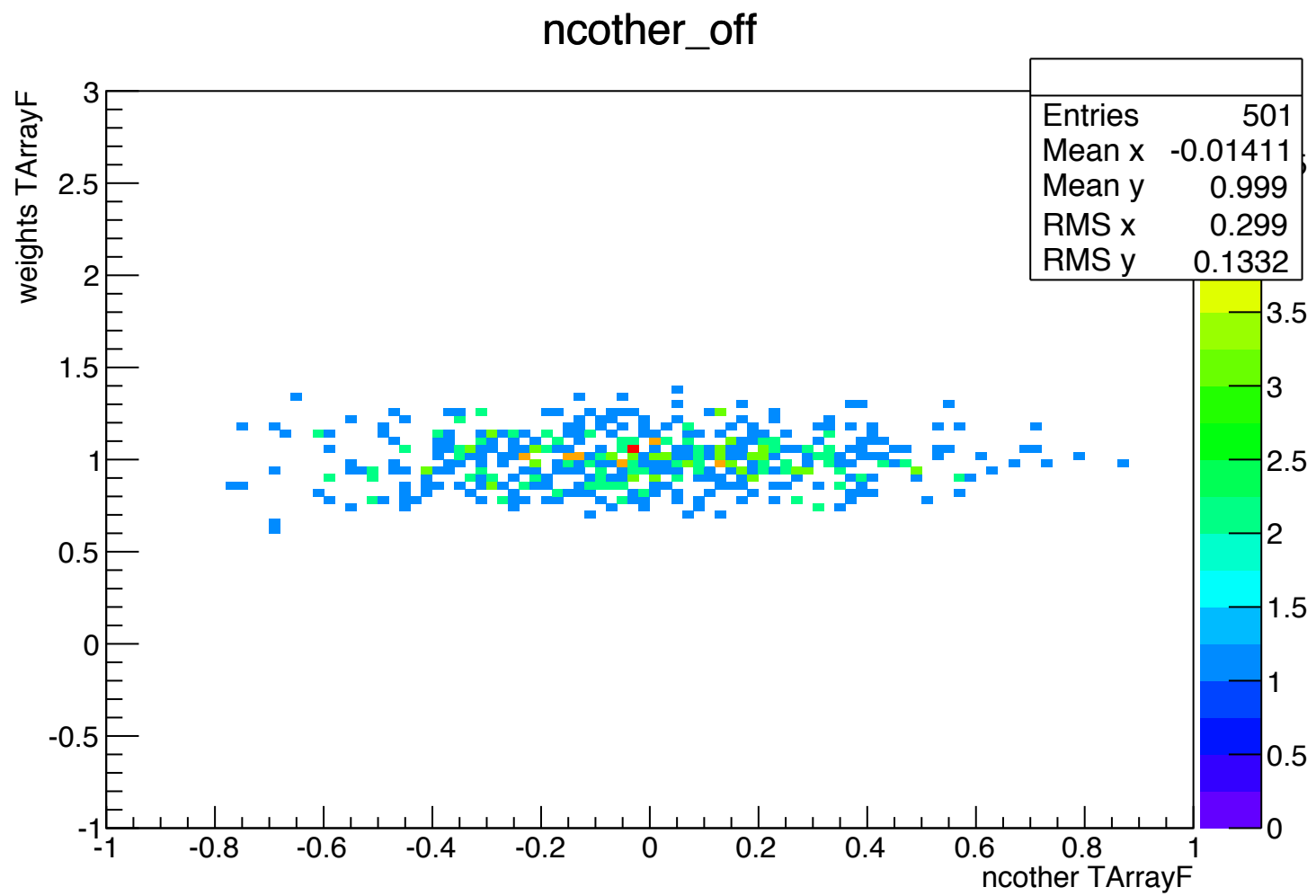


entry 8 (ccqe)

ncother\_off



entry 15 (ccqe)



ccqe (mode=1) events are different