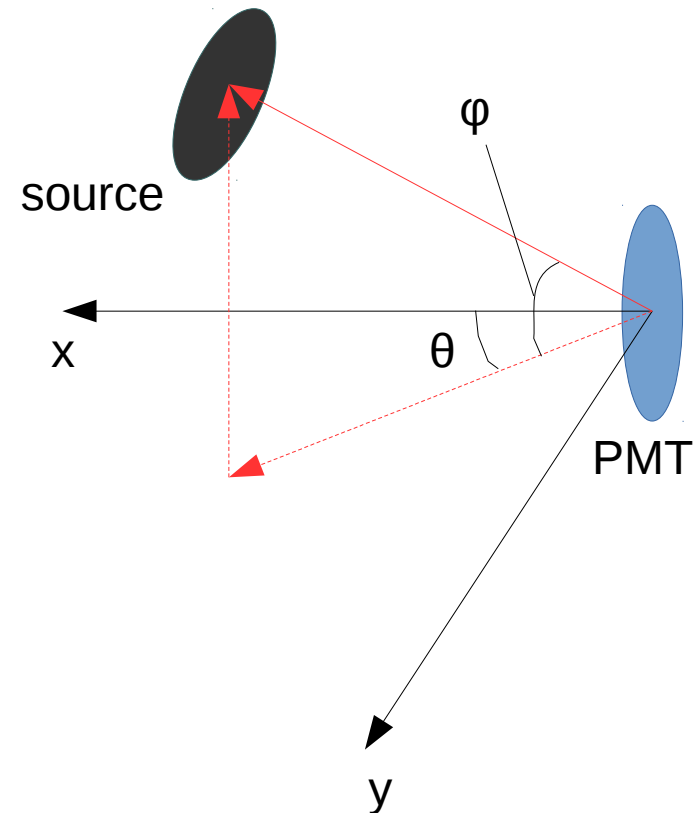


Progress Update

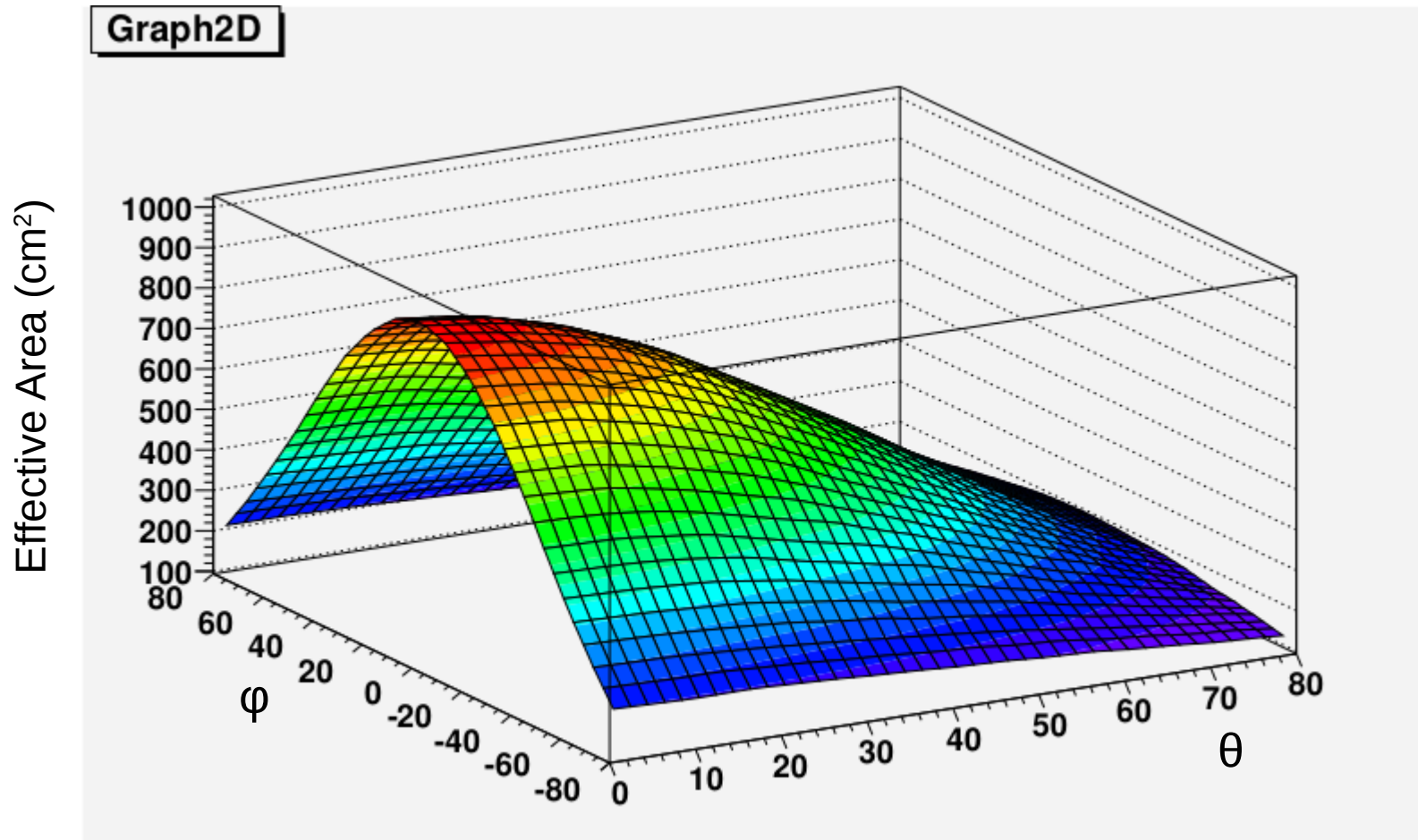
Trevor Towstego
UofT Neutrino/DM Meeting
May 18, 2017

mPMT θ - φ simulations

- Fixed issues I was having with WCSim
- Did simulations for both mPMT configurations
 - 100,000 events instead of 1,000,000 for each angle
- $0^\circ \leq \theta \leq 80^\circ$
- $-80^\circ \leq \varphi \leq 80^\circ$



2D plots (work in progress)



Example shown here for 3-ring configuration
Is $-80^\circ \leq \varphi \leq 0^\circ$ necessary?

Best way to present comparison of two configurations

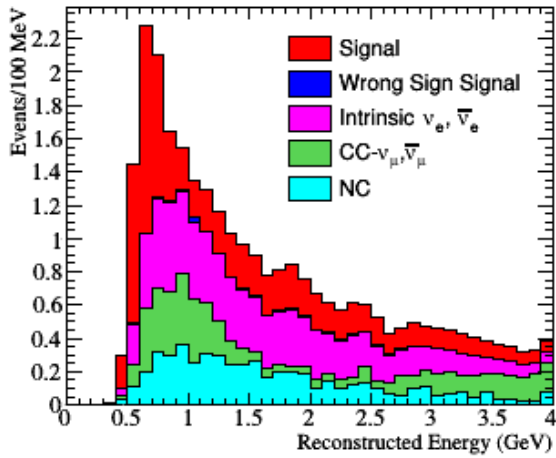
- 2D plot of difference in effective area?
- perhaps calculate integrated effective area

ν_e CC1 π^+ Studies

$$\nu_e + p/n \rightarrow e^- + \pi^+ + p/n$$

- Now have selection code working working with T2K MC
- Until yesterday was only using FHC MC
 - copied RHC MC over to neut (thanks Corina!) and will run the RHC selection today
- Made some plots – concerns with NC (see next slide)
 - Mistake in 2R selection?

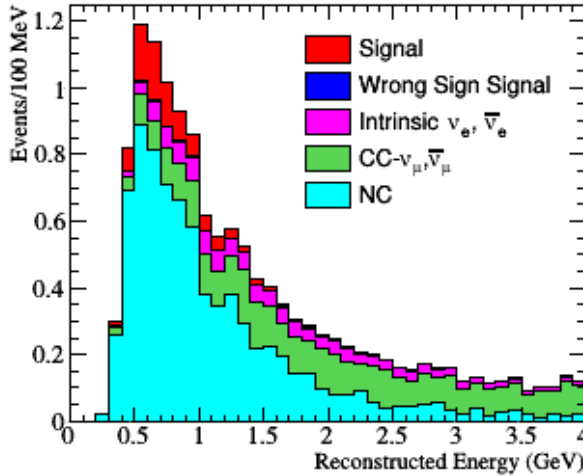
2Re π , FHC, L=1100km, OAA=2.5°



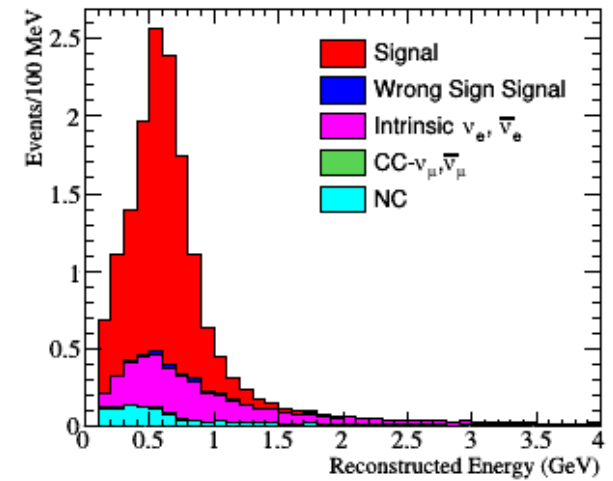
T2HKK

T2K

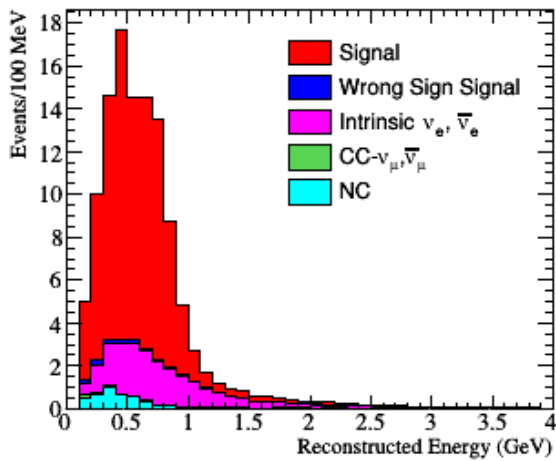
2Re π 0de, FHC, 1.000E21 POT



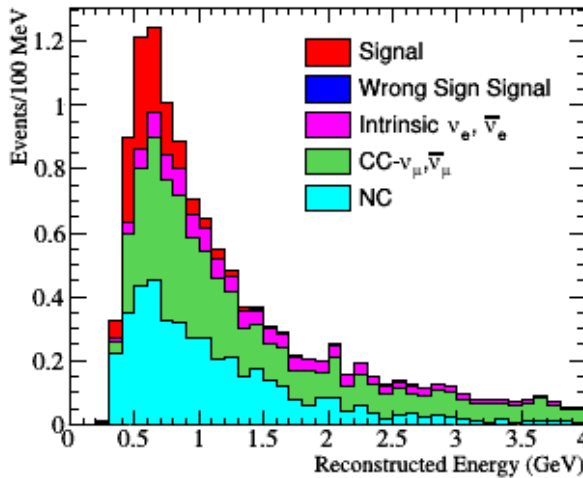
1Re0de, FHC, 1.000E21 POT



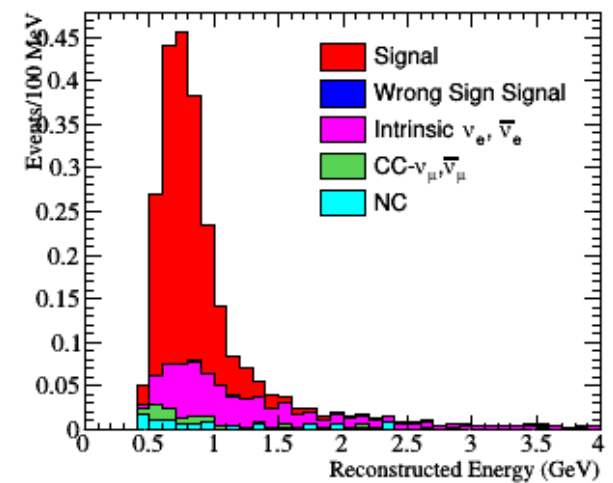
1Re0de, FHC, L=1100km, OAA=2.5°



2Re1de, FHC, 1.000E21 POT



1Re1de, FHC, 1.000E21 POT



1Re1de, FHC, L=1100km, OAA=2.5°

