

# Optical Interfacing of PMT

Elizabeth Chen

2017-06-07

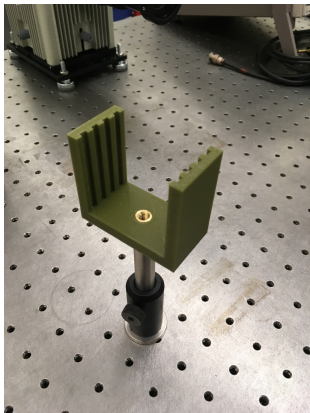
# Table of Contents

1. Progress Update

2. Next Steps

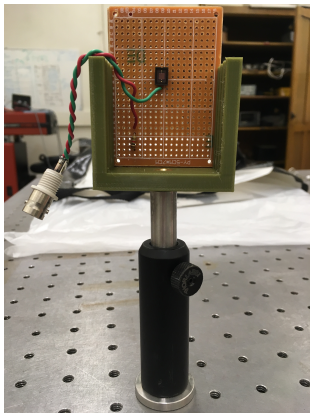
## Progress Update

# Photodiode Mount



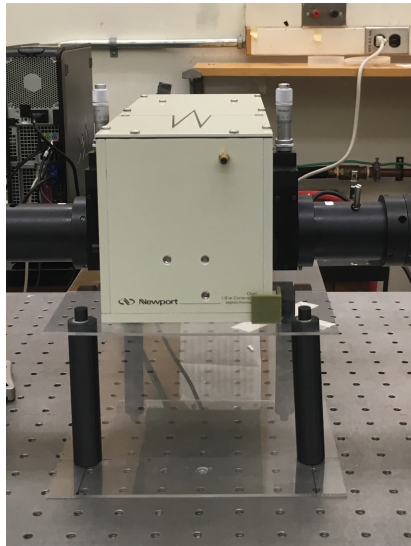
- Photodiode along with its circuit soldered onto 3 printed circuit boards stuck together
- Circuit board secured on plate holder
- Plate holder mounted on support column

# Photodiode Mount

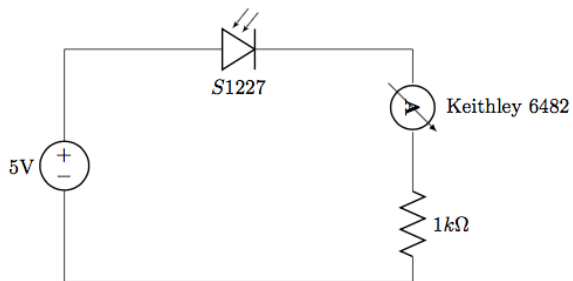


# Monochromator Mount

- Top and bottom platforms made of acrylic sheets
- PLA plastic support columns
- Can be secured onto breadboard table
- Can be taken apart



# Photodiode Circuit

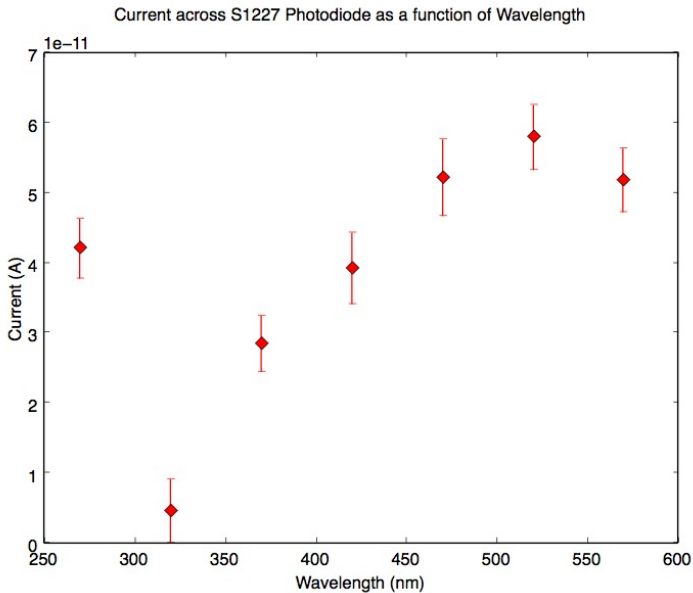


# Collimating Light Beam

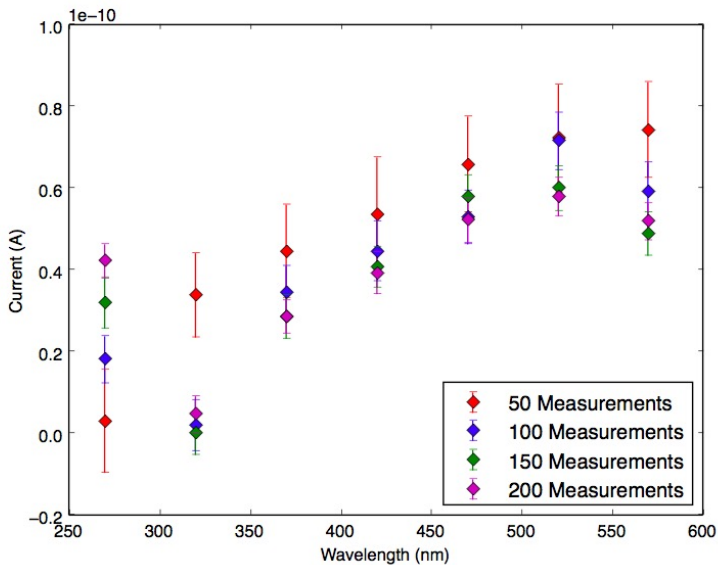
- I didn't really collimate the light beam
- Focused the light beam so it hits photodiode receptor screen entirely



# Experiment 0: Current as a Function of Wavelength



# Experiment 0: Current as a Function of Wavelength



## Next Steps

# Plans for upcoming weeks

- Configure beam splitter set-up
- Build another plate holder
- Repeat experiment 0 for more wavelengths